



DREAM NEWTOWN
YOUR DREAM OUR CREATION
DEVELOPER



RESORT CITY

Developed By
DREAM NEWTOWN PVT. LTD.

Luxury Destinations



Resort City



WHY OWNING A HOME MATTERS

A DREAM COME TRUE

Resort City is a modern lifestyle and real-estate development project by DREAM NEW TOWN PVT. LTD., created to combine comfortable living, leisure, entertainment, and investment opportunities within a single destination.

The project features premium residential apartments along with lifestyle amenities such as resorts, cafes, swimming pools, and recreational spaces designed to offer a complete and enjoyable experience for residents and visitors alike.

With a focus on quality development and long-term value, Resort City represents a new vision of modern living where comfort, relaxation, and opportunity come together.



"Now, we don't just live in a house, we have a home. A place where our kids can grow, where we can plant roots, and where every moment feels like ours to cherish."



Helipad

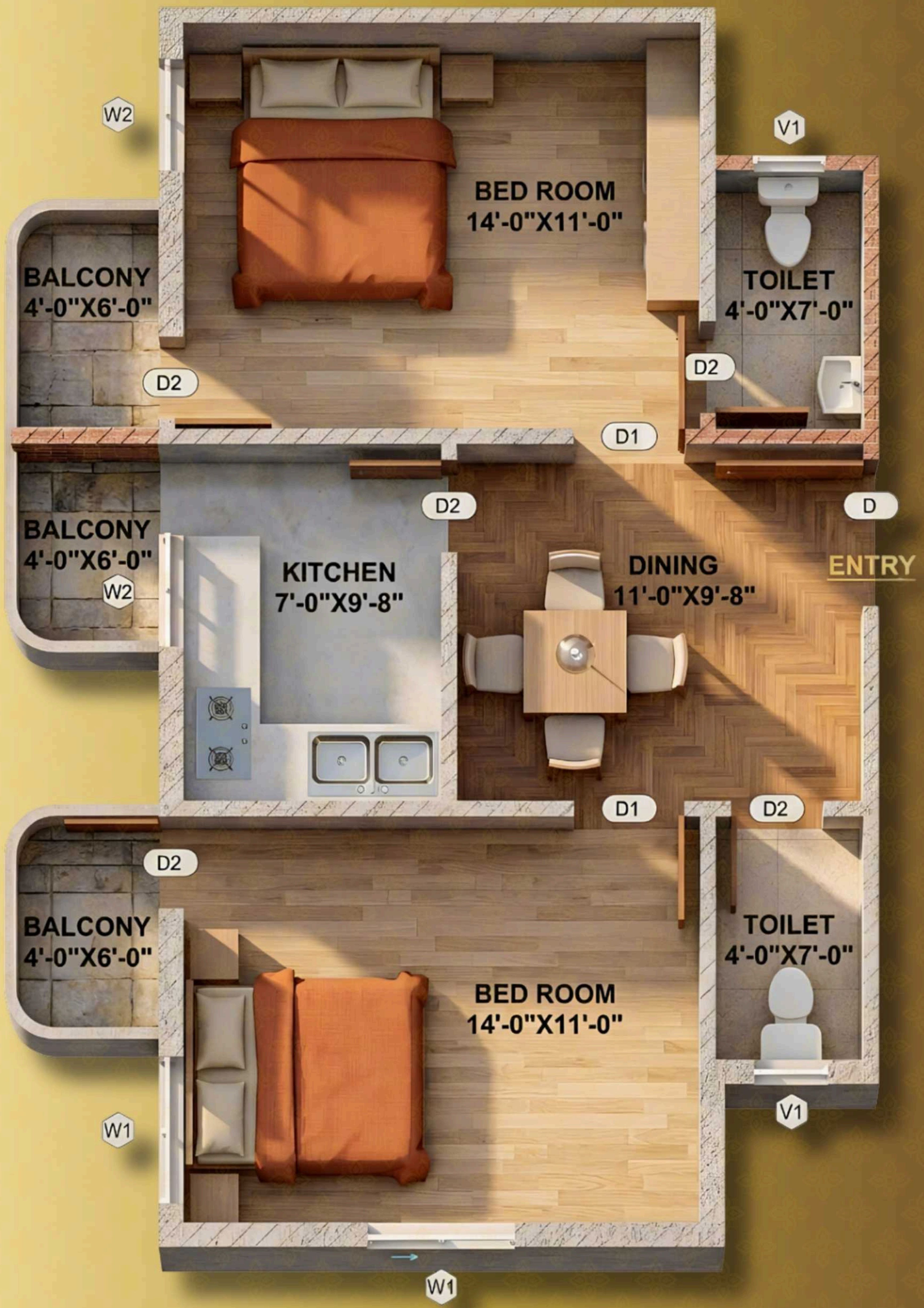


Park



Resort City

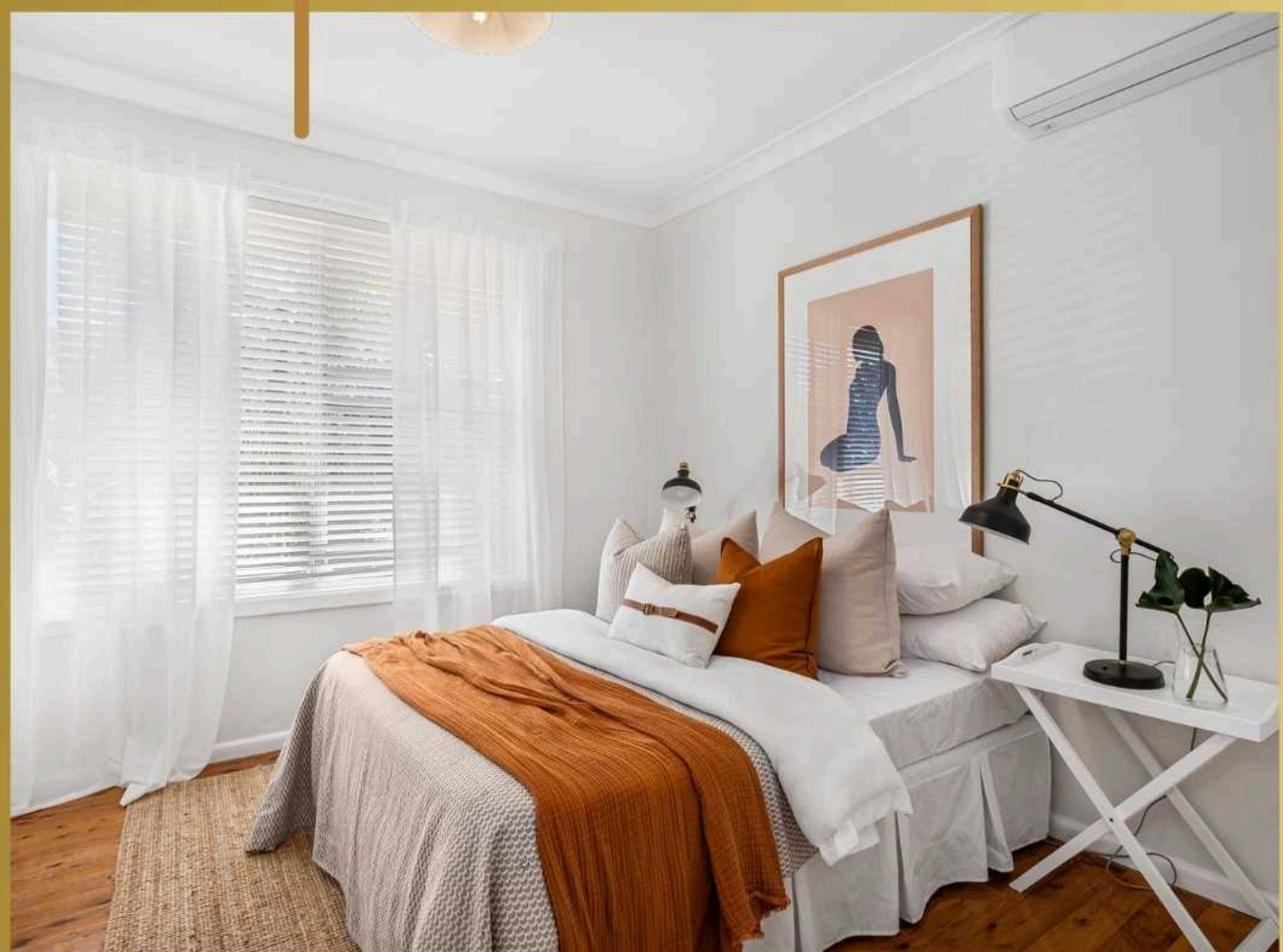
2BHK



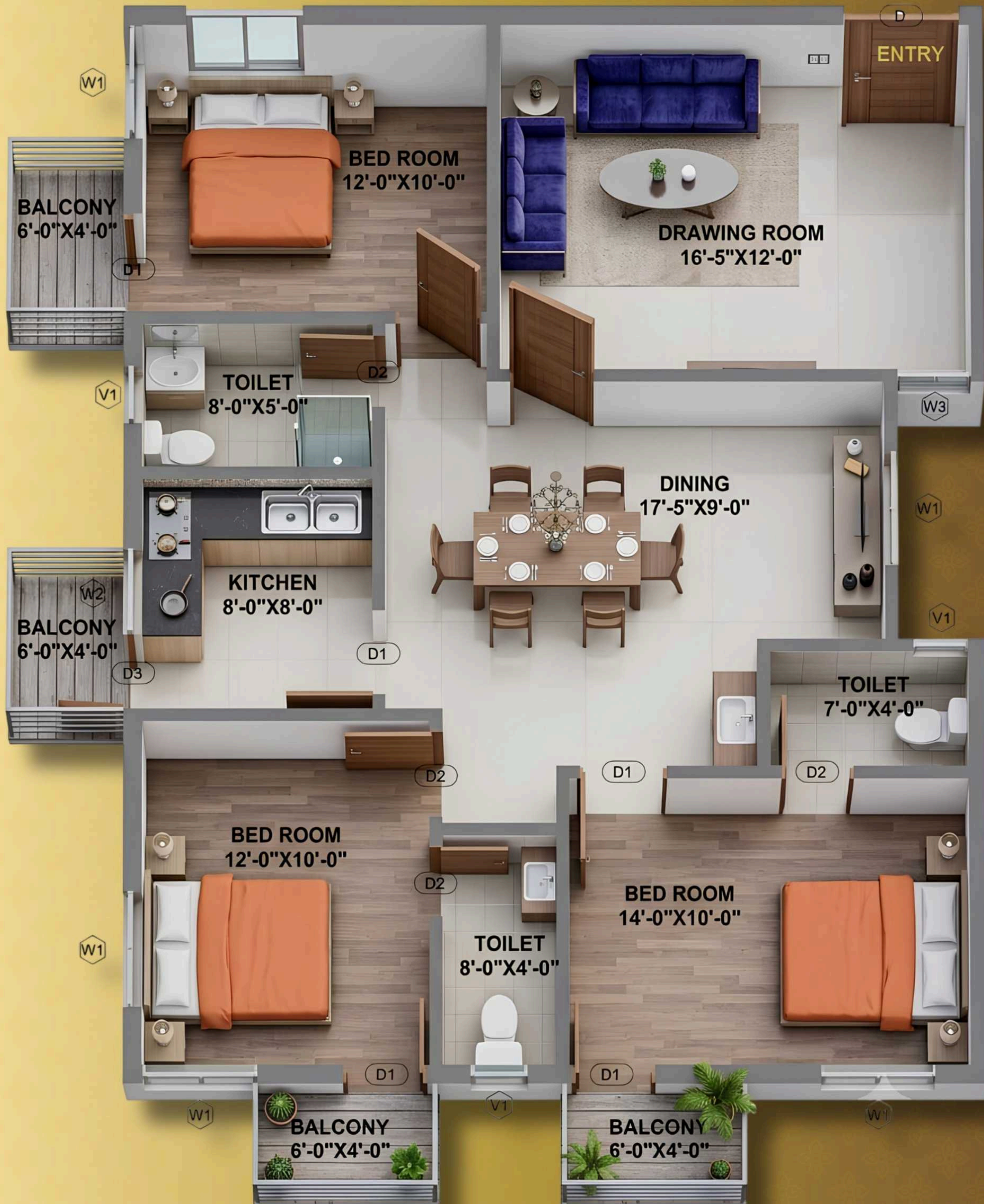
A 2BHK flat is ideal for small families, couples, and professionals needing extra space for guests or a home office. It offers a perfect balance of comfort, functionality, and affordability, making it suitable for modern living, long-term investment, and a convenient urban lifestyle experience.

Specifications

- Two bedrooms
- One living room
- One kitchen
- Two bathrooms
- Three balconies



3BHK



A luxurious 3BHK flat elevates the standard residential layout by emphasizing high-end aesthetics, superior spatial volume, and premium finishes. Beyond just "extra rooms," these units are designed to provide a resort-like living experience with a focus on comfort and exclusivity.

Specifications

- Three bedrooms
- Spacious living room
- One kitchen
- Spacious dining
- Three bathrooms
- Four balconies



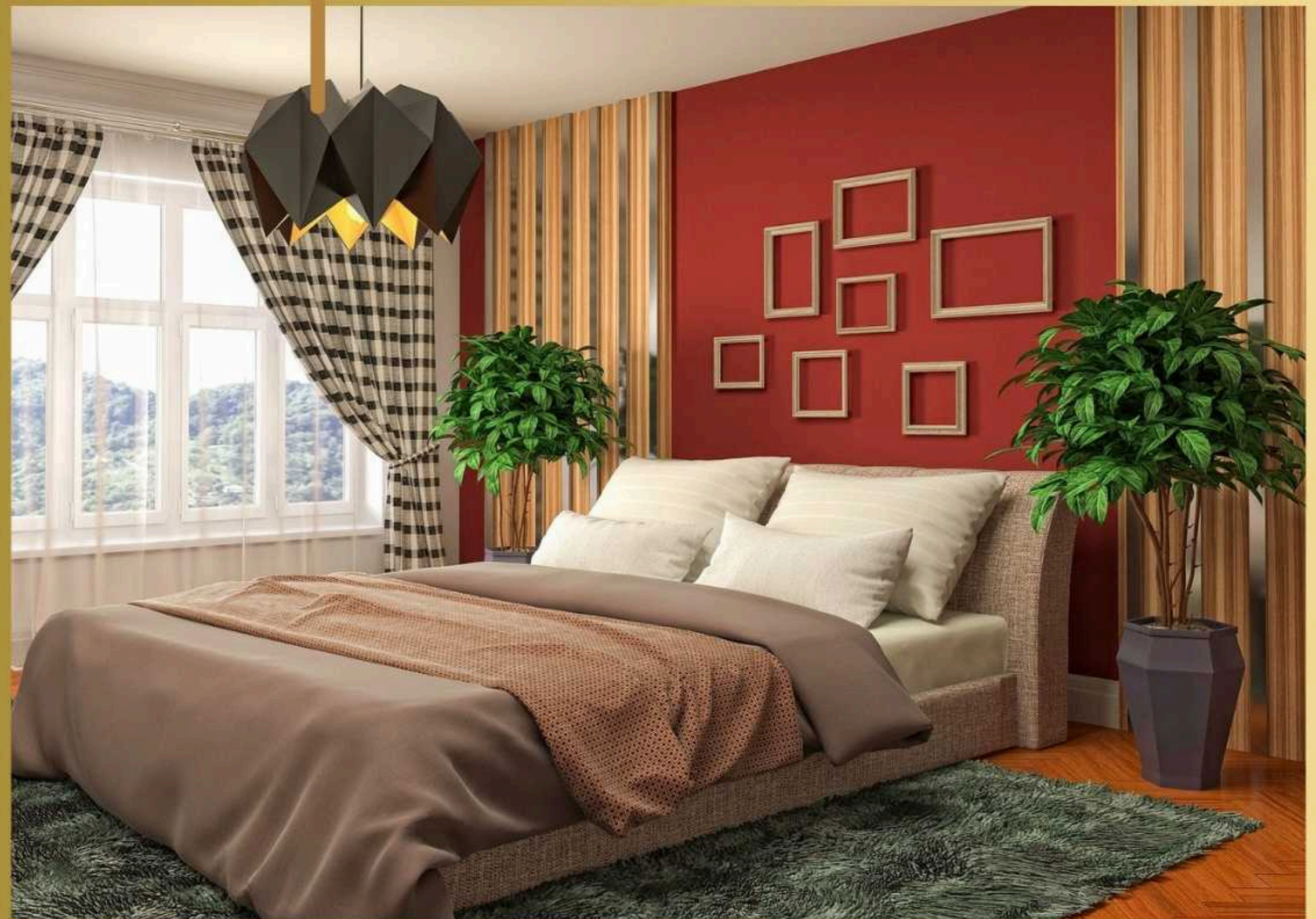
4BHK



A luxurious 4BHK flat represents the pinnacle of urban residential living, offering a sprawling layout that prioritizes opulence, multi-generational privacy, and bespoke architectural details. These units are designed for those who require significant square footage and high-end lifestyle amenities.

Specifications

- Four bedrooms
- Luxurious living room
- One kitchen
- Five Balconies
- Luxurious dining
- Four bathrooms





LUXURY DUPLEX FLATS

A luxurious 4BHK duplex is a two-story residential unit that combines the scale and privacy of a standalone villa with the security and amenities of a high-end apartment complex. By utilizing a vertical layout, it creates a clear distinction between social entertaining areas and private family quarters.

WELCOME TO A NEIGHBORHOOD
DESIGNED NOT JUST FOR LIVING, BUT
FOR THRIVING.

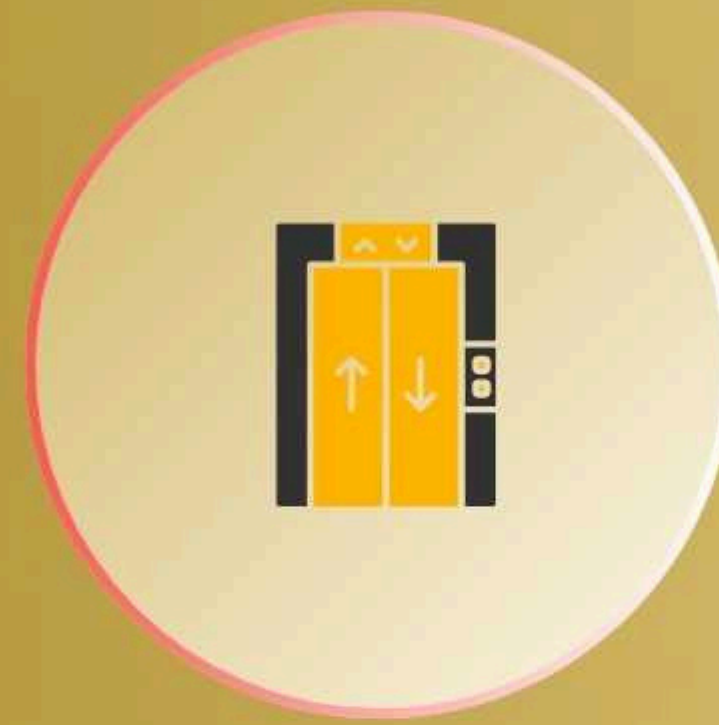
AMENITIES



Water Park



24 hours Power Backup



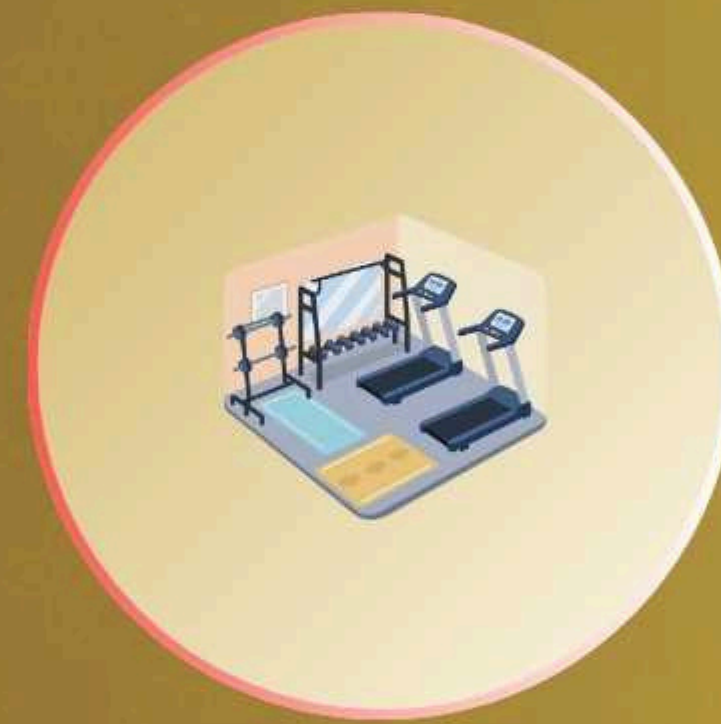
Automatic Lift



24 hours water supply



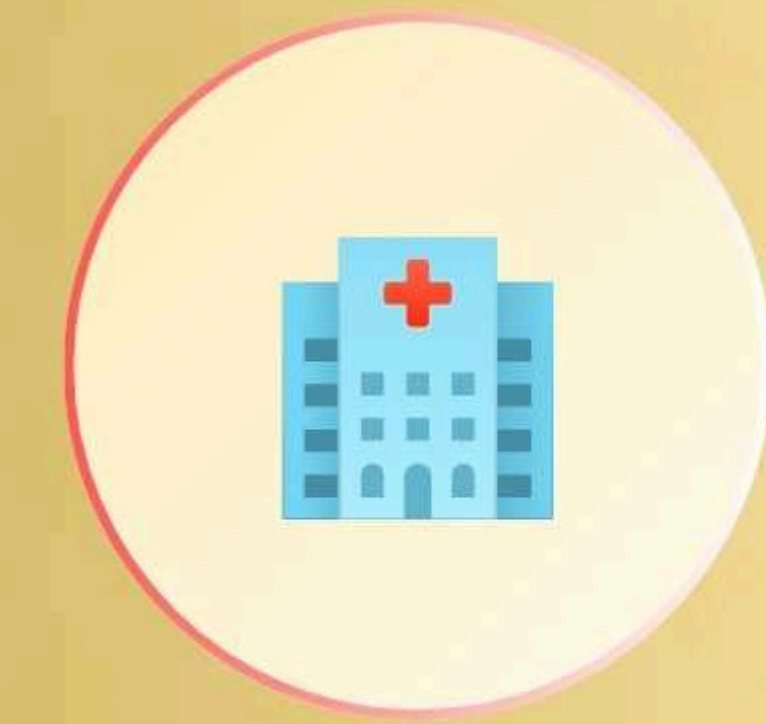
24 hours Security



Gymnasium



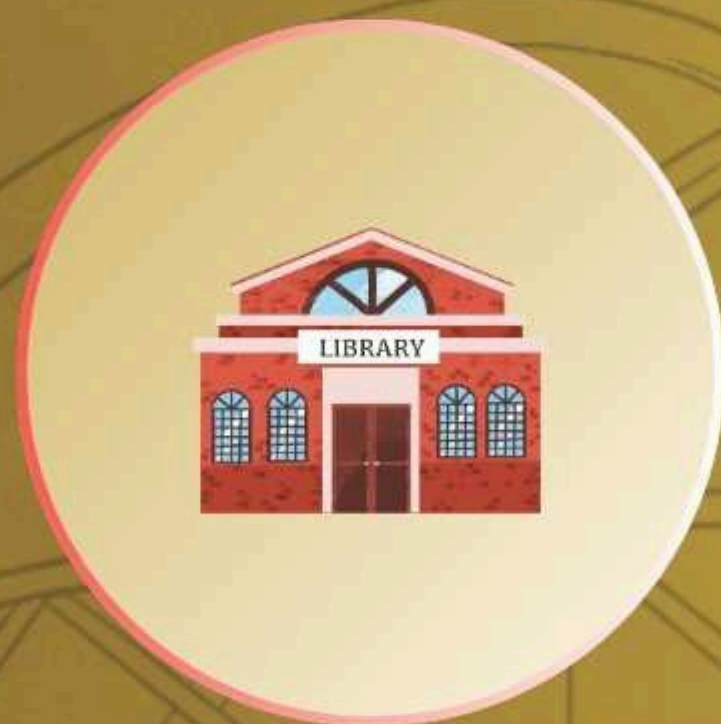
School



Private Hospital



65 feet wide road



Library



Club



Helicopter Service



Swimming Pool



Banquet Hall



Large mall



Playground



FRONT SIDE

FRONT SIDE OVERVIEW

The front side of Resort City showcases a modern and well-planned township featuring premium residential towers, wide roads, landscaped greenery, and organized infrastructure. The grand entrance and thoughtfully designed layout reflect a perfect blend of modern living, comfort, and lifestyle development.



RESIDENTIAL AREA

RESIDENTIAL AREA

The Residential Area of Resort City is designed to provide a modern, comfortable, and peaceful living environment surrounded by greenery and open spaces. Featuring premium residential towers, landscaped gardens, internal roads, recreational zones, and lifestyle amenities, the area offers a balanced community experience focused on comfort, convenience, and quality living.



BANQUET & EVENT SPACE

Resort City features a spacious banquet and event area spread across approximately 5 bigha, designed to host weddings, corporate events, social gatherings, celebrations, and large-scale functions. The venue offers a premium environment with ample open space, modern infrastructure, and a beautiful atmosphere suitable for creating memorable experiences.



FIRE STATION FACILITY

Resort City includes a dedicated fire station facility to ensure enhanced safety and emergency preparedness within the project area. The presence of this facility reflects the project's commitment to maintaining a secure, well-planned, and responsibly developed environment for residents, visitors, and businesses.



 Bird's eye view





MALL AREA (12 BIGHAS)

SHOPPING MALL ZONE

Resort City features a dedicated shopping mall zone spread across approximately 12 bigha, planned to provide a modern retail and commercial experience within the project. The area is designed to accommodate shopping outlets, lifestyle stores, food destinations, and entertainment spaces, creating a vibrant commercial hub for residents and visitors.



EDUCATIONAL ZONE

Resort City includes a dedicated educational zone spread across approximately 10 bigha, planned for the development of a modern school campus. The space is designed to support quality education and provide convenient learning facilities within the Resort City environment, contributing to a well-balanced and future-ready community.



HOSPITAL FACILITY

Resort City includes a dedicated hospital facility spread across approximately 5 bigha, planned to provide accessible healthcare and medical support within the project area. The facility is designed to ensure better convenience, safety, and emergency care services for residents, visitors, and the surrounding community.

Resort Investment Opportunity

The Resort Investment Segment of Resort City offers a unique opportunity to become part of a premium hospitality and leisure destination. Located adjacent to and connected with the main residential township, this exclusive resort zone is designed for luxury stays, tourism, relaxation, and long-term investment potential.

The concept combines lifestyle benefits with investment value, allowing investors to participate in a professionally managed resort ecosystem featuring cottages, pool villas, recreational facilities, and premium hospitality services. Designed as a modern leisure destination, the resort area aims to create both memorable experiences and sustainable future growth opportunities.

Key Highlights

- Premium resort-style investment opportunity
- Connected with the main Resort City township
- Luxury cottages and pool villas within a natural environment
- Designed for tourism, leisure, and hospitality experiences
- Professionally planned resort infrastructure and amenities
- Long-term growth and future investment potential
- Peaceful atmosphere with modern lifestyle facilities
- Ideal destination for family vacations and relaxation
- Combination of lifestyle enjoyment and value-based investment





RESORT AREA

RESORT AREA

The Resort Area of Resort City is designed as a premium leisure and relaxation destination surrounded by greenery, water features, and beautifully planned landscapes. The area includes luxury cottages, pool villas, recreational zones, and lifestyle amenities that create a peaceful resort-style environment for visitors, families, and holiday experiences.

ATTRACTION OF RESORT AREA



HELIPAD



VILLA



Cottage



Hotel



Swimming Pool



Water Park



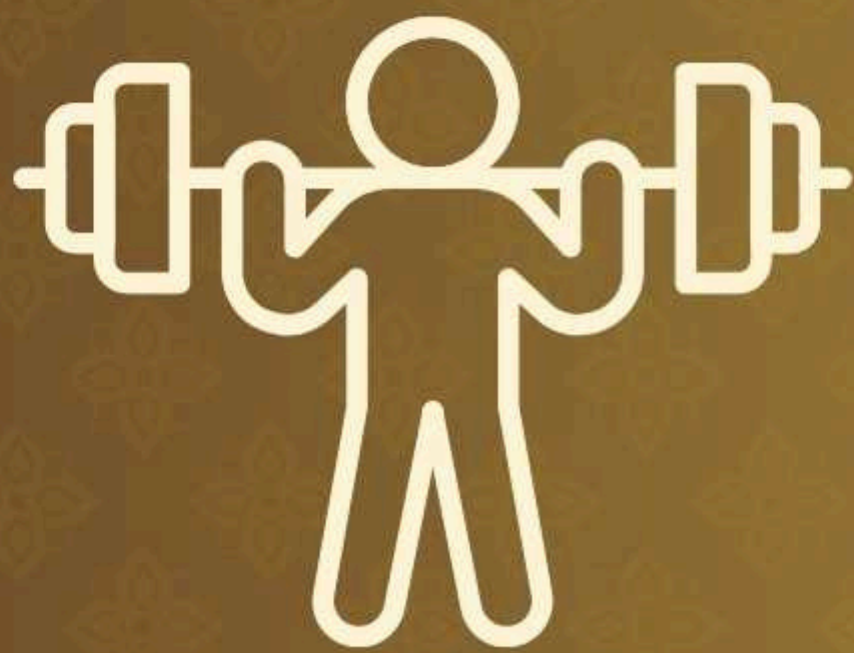
Lake



Open Area Camp



Bar



Gym



Kids play area



Library



HELIPAD

HELIPAD FACILITY

Resort City includes a dedicated helipad facility designed to enhance accessibility, convenience, and premium connectivity within the project. The helipad adds a modern and prestigious feature to the development, supporting VIP access, emergency transportation, and future-oriented infrastructure planning.



FAMILY COTTAGES (RESORT AREA)



FAMILY COTTAGES

As part of the Resort and Leisure Zone, Resort City features premium Family Cottages designed for short stays, vacations, and relaxation experiences. Separate from the main residential apartment area, these cottages provide a peaceful resort-style atmosphere where visitors and families can enjoy comfort, privacy, and leisure within a refreshing environment.



POOL VILLA (RESORT AREA)

POOL VILLAS

As part of the Resort and Leisure Zone, Resort City offers premium Pool Villas designed for luxury stays, relaxation, and vacation experiences. Separate from the main residential apartment area, these villas provide private comfort, modern amenities, and an exclusive resort-style atmosphere for visitors and guests seeking a premium leisure experience.



FOREST COTTAGE (RESORT AREA)

FOREST COTTAGES

As part of the Resort and Leisure Zone, Resort features beautifully designed Forest Cottages surrounded by a natural and peaceful environment. Separate from the main residential area, these cottages are specially planned for resort stays, relaxation, and holiday experiences, offering visitors a calm and refreshing getaway within nature-inspired surroundings.



WATER PARK (RESORT AREA)

WATER PARK

Resort City also includes a modern water park designed to provide fun, relaxation, and entertainment for visitors of all age groups. With exciting water attractions, family-friendly recreational spaces, and a refreshing environment, the water park adds a vibrant leisure experience to the overall Resort City destination.

OTHER AMENITIES



Power Station

The hybrid facility provides a reliable energy grid for the Resort City township through these systems:

- Diverse Generation: Combines solar, wind, and biomass for a consistent power flow.

Direct Distribution: Features an on-site substation and dedicated power lines to serve the entire community.

Water Supply

The water supply system provides reliable service to the Resort City township using these key features:

- Massive Storage: A central complex with a capacity of 10,00,00,000 liters.

High-Pressure Network: Large-scale piping and pumping systems ensure consistent flow across the entire resort area.



STP

The Sewage Treatment Plant (STP) manages wastewater for the Resort City township with these systems:

- Effective Filtration: Uses clarifiers and aeration tanks for high-volume processing.

Eco-Friendly Design: An industrial-scale facility built to maintain clean environmental standards across the resort.

OTHER AMENITIES



24X7 Ambulance

- Always Available: 24/7 emergency medical support every day of the year.
- Quick Response: Rapid dispatch for immediate on-site care and transport.
- Fully Equipped: Staffed with paramedics and life-saving medical gear.

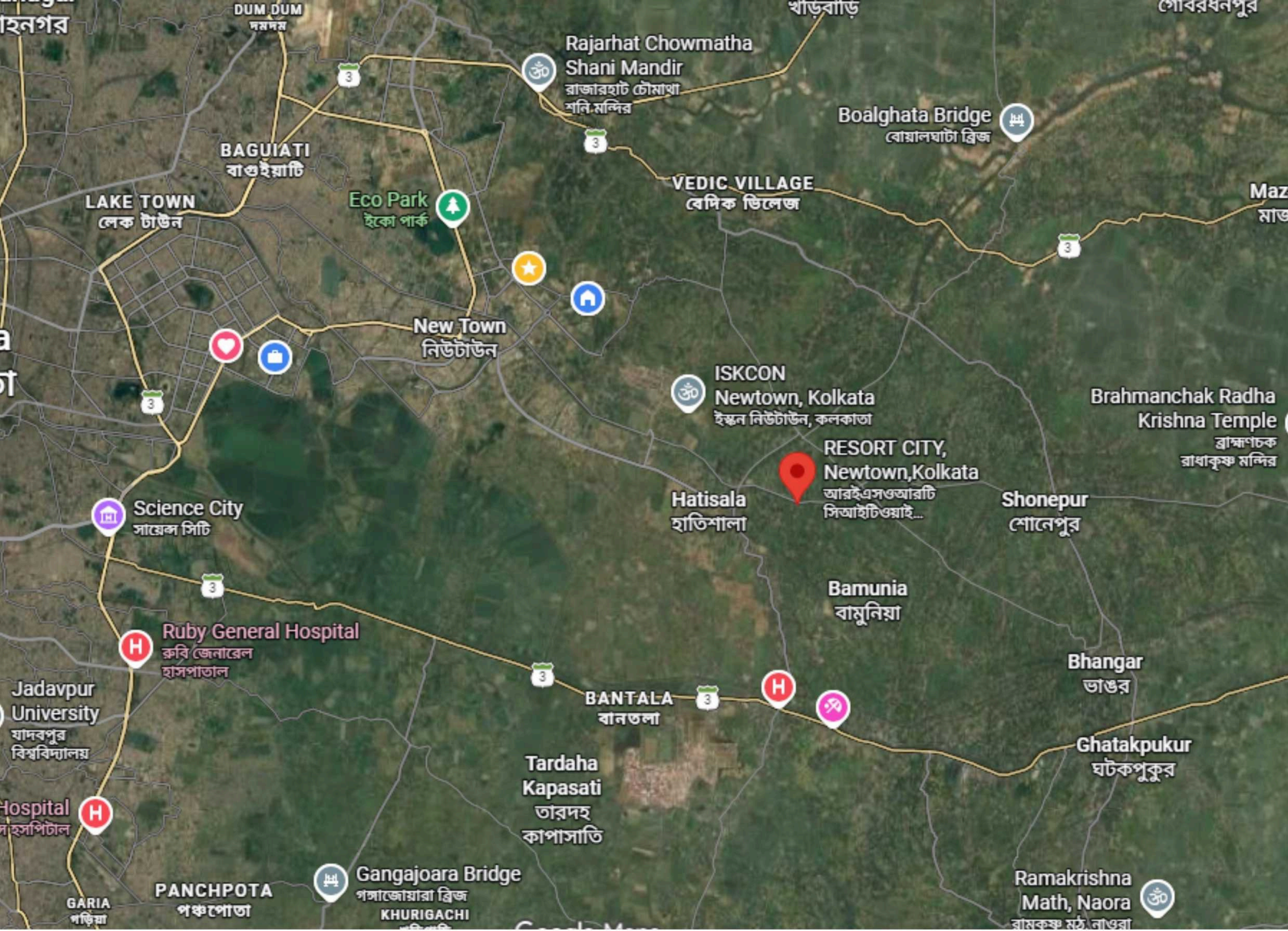
Leisure

- Club: A premium hub for social gatherings, indoor games, and relaxation.
- Gym: A modern fitness center with professional strength and cardio equipment.
- Playground: A secure, landscaped outdoor space with modern equipment for children.



Swimming Pool

- Olympic-Size Pool: A large, professional-grade pool designed for both fitness laps and relaxed swimming.
- Kids' Splash Zone: A safe, shallow aquatic area featuring fun water slides and interactive play structures.
- Designer Poolside: A landscaped deck with premium loungers and cabanas for ultimate relaxation.



LOCATION



Hatishala Road, KB/22 Bus Route,
Jiran Gachi, Newtown, Kolkata – 135

- 1-3 kms from Bazar, ITC Green Centre and Arts Acre.
- 4 kms from Shapoorji Housing Complex.
- 6 kms from St.Xavier's University, IIT Kharagpur Research Park and Downtown Mall.
- 8 kms from Tata Medical Center.
- 10 kms from Bantala Leather Complex.
- 10 kms from Rabindra Tirtha Metro Station.
- 19 kms from Bidhannagar, Shealdah
- 14 kms from Sector-V
- 18 kms drive from Kolkata Airport.
- 25 kms from Howrah station



SCAN THIS QR TO GET
THE LOCATION

DREAM NEWTOWN PVT. LTD.



MARKETING OFFICE ADDRESS

Mani Casadona 11th Floor, East Tower, IIEs - 1A, North 24 Parganas,
Kolkata - 700160

PROJECT LOCATION

Hatishala Road, KB/22 Bus route, Jiran Gachi, Newtown,
Kolkata - 700135

CONTACT



9230188594 / 9230188593 / 9230188595
9230188596 / 9230188592



info@dreamnewtown.in



www.dreamnewtown.in

